



Plot 12 Beaconsfield House, Sandford Street,
Lichfield, WS13 6QA

£245,000

Plot 12 Beaconsfield House, Lichfield

£245,000



Plot 12 Beaconsfield House is a superb two bedroom first floor apartment set in this exclusive development in the heart of Lichfield.

Within walking distance of the shops and amenities, bars and restaurants that Lichfield has to offer, this modern home boasts an open plan kitchen/living space with integrated appliances and feature 'Juliet' style balconies with views of Lichfield Cathedral, two bedrooms and a modern shower room.

A lift provides easy access to the apartment which is sold with vacant possession and is ready to move into now.

Property Specification

POPULAR CENTRAL LOCATION
BRAND NEW FIRST FLOOR APARTMENT
TWO GENEROUS BEDROOMS
OPEN PLAN KITCHEN/DINER WITH
'JULIET' STYLE BALCONIES

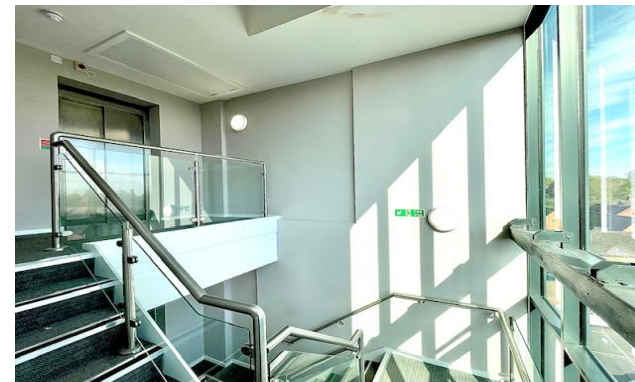
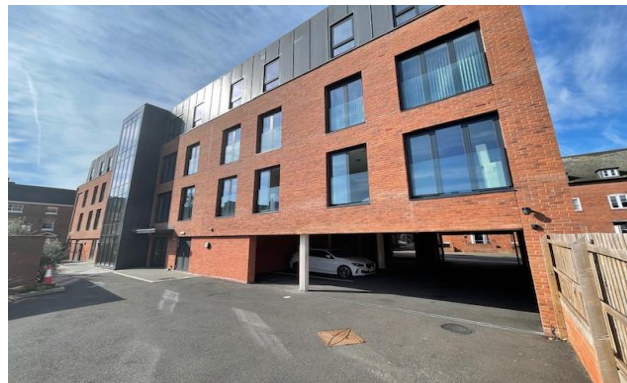
Bedroom 1 11' 6" x 11' 2" (3.5m x 3.4m)

Bedroom 2 11' 2" x 10' 6" (3.4m x 3.2m)

Open Plan Living Room/Kitchen 18' 8" x 17' 5"
(5.7m x 5.3m)

Inner Hallway

Shower Room





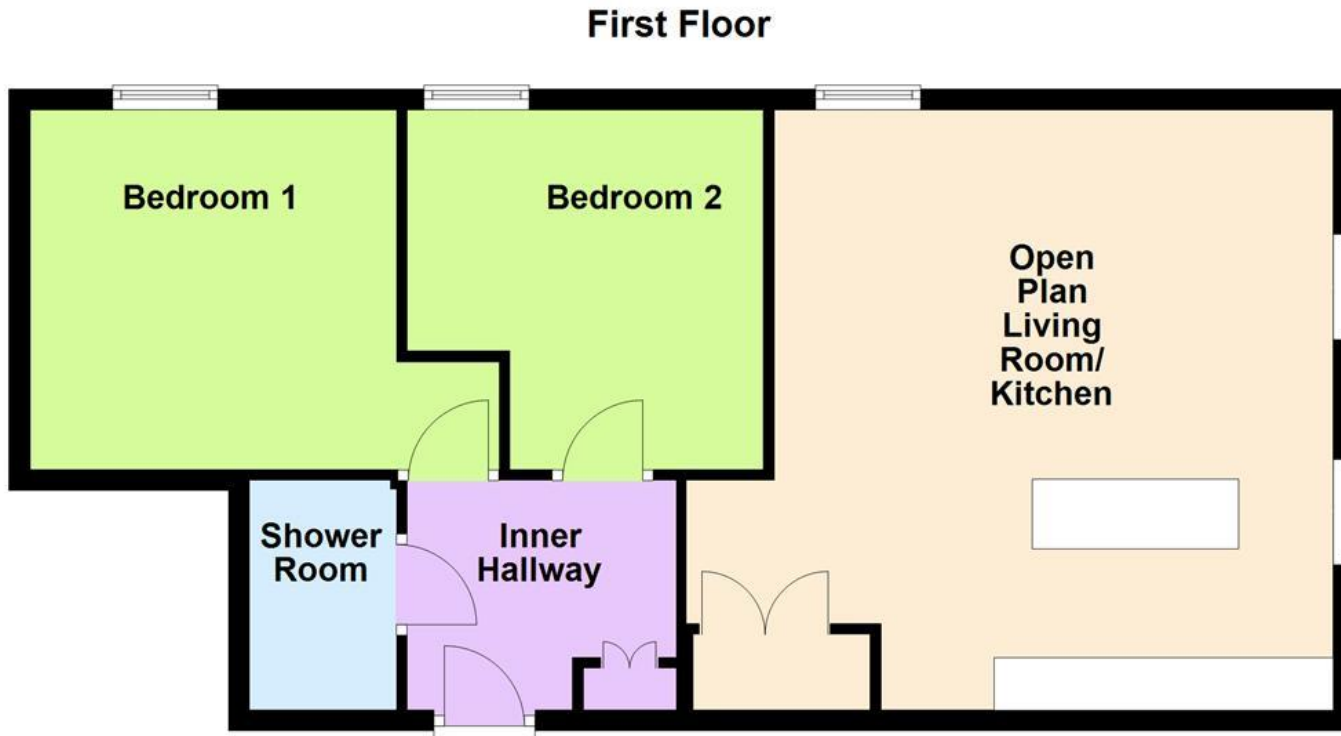
Agent's Note:

Every care has been taken with the preparation of these Sales Particulars but they are for general guidance only and complete accuracy cannot be guaranteed. If there is any point which is of particular importance, professional verification should be sought. The mention of any fixtures, fittings and/or appliances does not imply they are in full efficient working order as they have not been tested. All dimensions are approximate. Photographs are reproduced for general information and it cannot be inferred that any item shown is included in the sale. These Sales Particulars do not constitute a contract or part of a contract.
Came on the market: 2nd July 2025

Services connected: Electric, Water, & Drainage
Council tax band: TBC
Tenure: Leasehold 125 years
Ground Rent: N/A
Service Charge: Approximately £120 p.c.m.

Floor Plan

This floor plan is not drawn to scale and is for illustration purposes only



Energy Efficiency Rating

**New
Instruction
Awaiting
E.P.C.**

Map Location

